

is a point-of-entry, fully self-contained, pressure-driven, all-membrane water purification unit. This includes **high-molecular-weight substances, colloidal materials, bacteria, cryptosporidium, cysts, viruses, fungi, water-soluble heavy metals, and chlorine** without requiring frequent maintenance. In addition, the CAMELTRAIN provides built-in spectral analysis of outgoing water providing ultraviolet, visual, near-infrared, and infrared range analysis of outgoing water for micropollutants, with the ability to upload the data.



SYSTEM INCLUDES

- > Input, output, purge in and purge out connection points
- > Multispectral water quality monitor
- > Battery backup supplying up to 3 hours of use
- > Multiple power sources; AC, DC, solar
- > Automated or manual backwash capability
- > Metal encasement with bolt-down points
- > Membrane failure detection
- > Location GPS Transmitter
- > External plant matter filter
- > Real-time water quality analysis transmitted via Bluetooth to CamelTrain App
- > 100% organic membrane cleaning solution

OPERATIONAL CONCEPTS

- > Point-of-entry water purification: residential/business
- > Automated or semi-automated operation
- > Automated flushing/cleaning
- > Can be used as an emergency water purifier or permanent water purifier

OPTIONAL

- > External disk filter for high-turbidity water sources

CERTIFICATIONS

- > All internal membranes are made in the USA in ISO 9001:2008 certified facilities.
- > Nanofiltration membranes are NSF 16 certified when used.

SONDE ANALYTIC TECHNIQUE (measurements)

- > Total organic carbon (TOC)
- > Chemical oxygen demand (COD)
- > Spectral absorption coefficient (UV254)

CAMELTRAIN MODEL // CTCR

DIMENSIONS: 29" x 42" x 8" (73.66 x 106.6 x 20.3 cm)

WEIGHT: 75 lb

CONTAMINATION REMOVAL:

Organic and inorganic contamination

WATER SOURCE:

Cistern, well, river, lake, borehole, Municipal water

PORT SIZES: 3/4" NPT

CAPACITY: 228 gph (863 lph)

DATA CONNECTION: Bluetooth

POWER CONNECTION:

12-24 VDC, 115-230 VAC, and 24 VDC solar

MAINTENANCE REQUIREMENTS:

Operates 3 to 5 years prior to maintenance.

Duration dependent upon volume and loading.

MINIMUM. TO MAXIMUM WATER TEMPERATURE:

32°F to 104°F (0°C to 40°C)

FEED PRESSURE MAXIMUM: 93.75 psi (646.3 kPa)

TYPICAL OPERATING PRESSURE: 43.5 psi (3 bar)

MAXIMUM PRESSURE DROP: 13 psig (0.9 bar)

CHLORINE TOLERANCE: 250,000 at ppm hrs

WATER RECOVERY RATE: up to 95%

BATTERY BACKUP: 3 hours

AMPERAGE DRAW:

380W during purge process.

264W when on battery backup



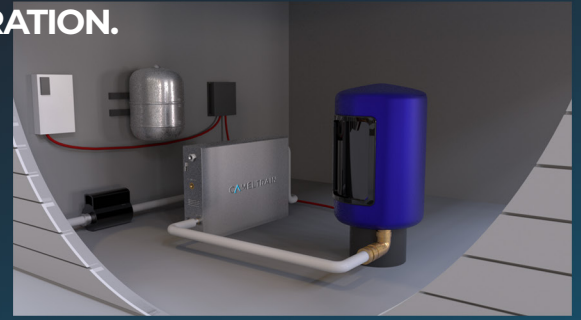
Profile



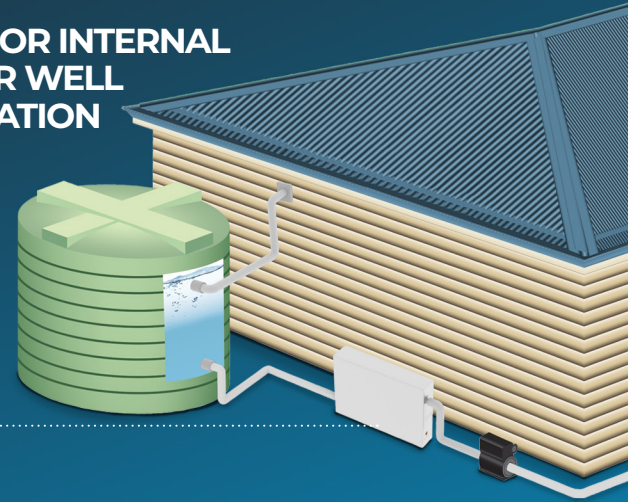
Front

Back

> INTERNAL WATER TANK CONFIGURATION.



> EXTERNAL OR INTERNAL CISTERN OR WELL CONFIGURATION



WATER SECURITY

THE CAMELTRAIN CR water treatment system is a point-of-entry and emergency water purification device designed to turn fresh water sources into safe, potable water. The CAMELTRAIN has a built-in multispectral analysis unit that will provide real-time reporting on micropollutants present in the water. Water quality and performance data can easily be uploaded via a computer or mobile device using the Bondurant app.

Designed to be reliable, maintenance free and simple to install, CamelTrain can purify approximately 216 gallons of potable water per hour running off AC, DC, or solar energy. In addition, it has a built-in battery backup that can provide up to 3 hours of use.

Bondurant Technologies utilizes membrane technology to purify incoming water. CamelTrain is designed to use a 100% organic solution to clean the membranes, which is safe for plants, animals and the environment. Traditional methods of membrane cleaning use chemical solutions which can poison the environment.

The system is complete with feed and purge pumps, automatic backflushing filtration, and a multispectral water analysis unit with a USB computer connection point. The CamelTrain is designed to operate for 3 to 5 years without the need to replace components. The CamelTrain is ideal for residential use, commercial use, disaster relief, military camps and hospitals, animal hydration, or any other mobile application. **The system can be set up and operational in minutes.**

WARRANTY

Although the CamelTrain water purification system does remove bacteria and viruses, it is not certified to remove >99.99999% of bacteria and >99.99% of viruses required by the U.S. Environmental Protection Agency water purifier standard without the other agents. Bondurant Technologies has no control over the end use of our water filtration systems; therefore, our warranty is limited to the replacement of any component we deem defective, and any such replacement is at our sole discretion. All component manufacturers' warranties apply. Bondurant Technologies International water purification systems will remove 99.999+-% of suspended solids and bacteria from most water sources, but no water filtration system can remove 100% of bacteria and viruses, and no claim of reaching 100% effectiveness is made or implied.

BONDURANT
TECHNOLOGIES INC.

PHONE: +1.678.833.9261

WEB: PORTABLEPURE.COM

EMAIL: info@portablepure.com

